

Abilene

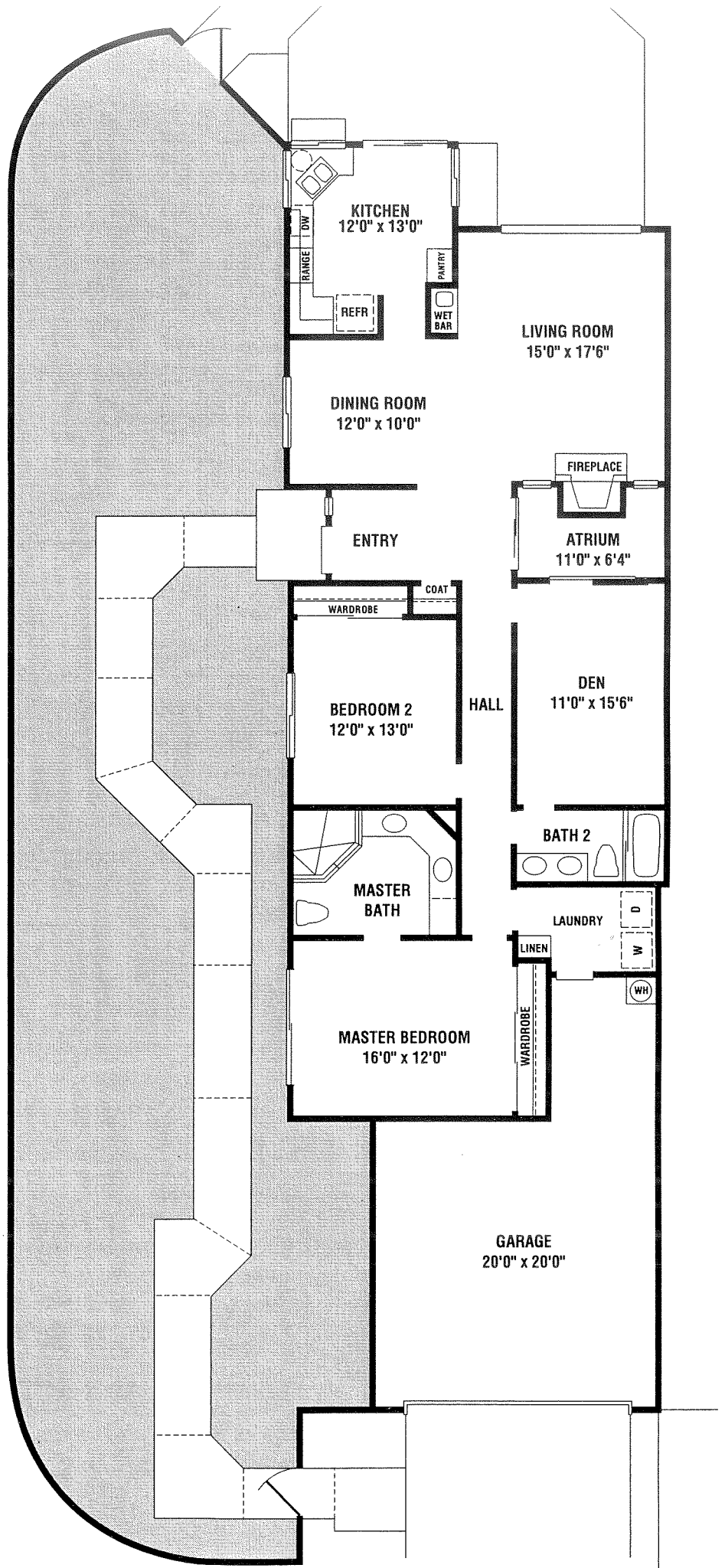
(No Side Yard)
2 Bedroom
2 Bath
Convertible Den
Atrium
Fireplace
Wet Bar
2 Car Garage
End Unit

1,630 Square Feet

Laredo

Enclosed Side Yard
2 Bedroom
2 Bath
Convertible Den
Atrium
Fireplace
Wet Bar
2 Car Garage
End Unit

1,630 Square Feet



Pro Realty has obtained this information from what it believes to be reliable sources but makes no guarantees for its accuracy or completeness.

Floor plans shown were prepared by the developer, and may be different than actual floor plans and dimensions. Floor plans are not drawn to scale.

Condominium homes in The Lakes are designed following the classic California ranch architectural theme. Twelve original floor plans offer a wide variety of living opportunities from 1,358 to 2,785 square feet. Many individual units have been remodeled and expanded creating interesting variations from these basic models.

©2000 Pro Realty